

DrayTek

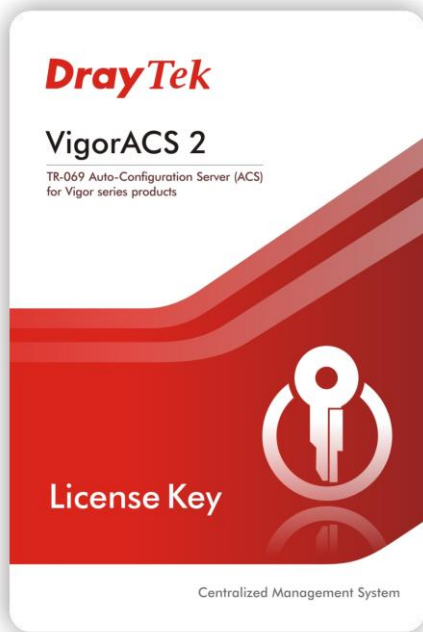


Vigor ACS2

Central Management Software

Introduction

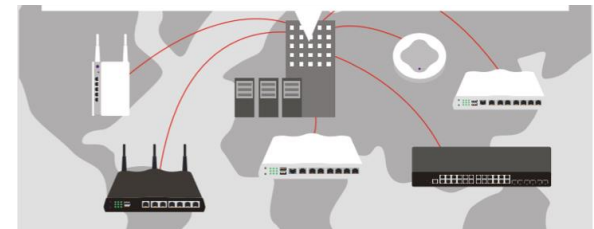
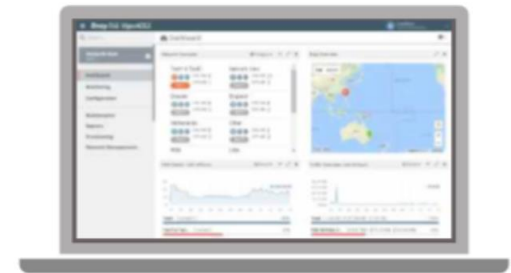
A Centralized Management Software for all your Vigor Router and VigorAP.



- Device Provisioning
- Status Monitoring
- Statistics & Analyzing
- Event Log Collecting
- VPN Wizard
- Device Maintenance
- Generating Reports

ACS & TR-069 Protocol

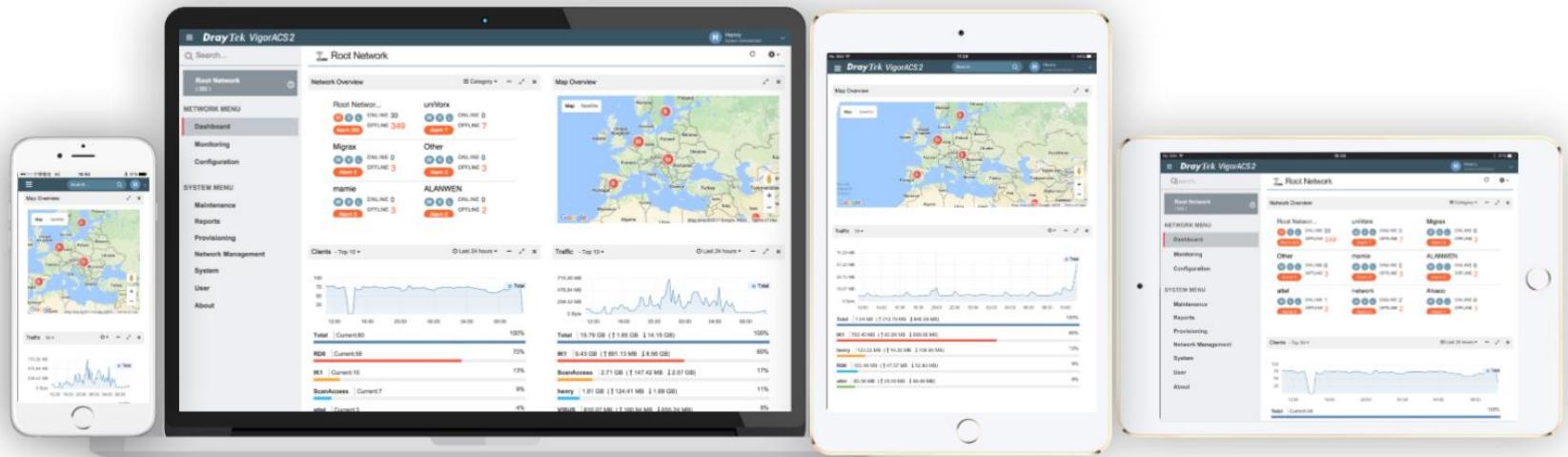
- ACS = **A**uto **C**onfiguration **S**erver
- TR-069:
 - A protocol for remote management of end-user devices
 - SOAP/HTTP-based transportation
 - Common operations:
 - Get Parameter
 - Set Parameter
 - Download files
 - Upload files



Components of VigorACS 2

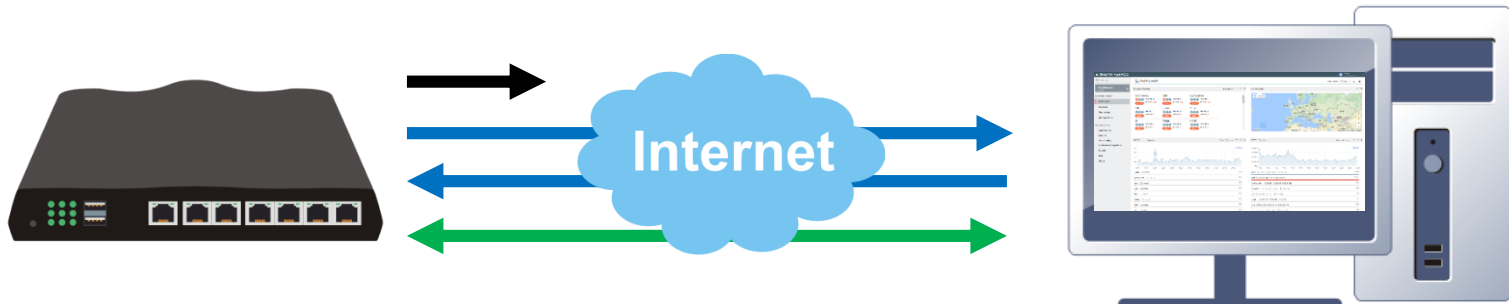
VigorACS2 is consisted of:

- TR-069 protocol
- MySQL database
- HTML5 standard with responsive User Interface



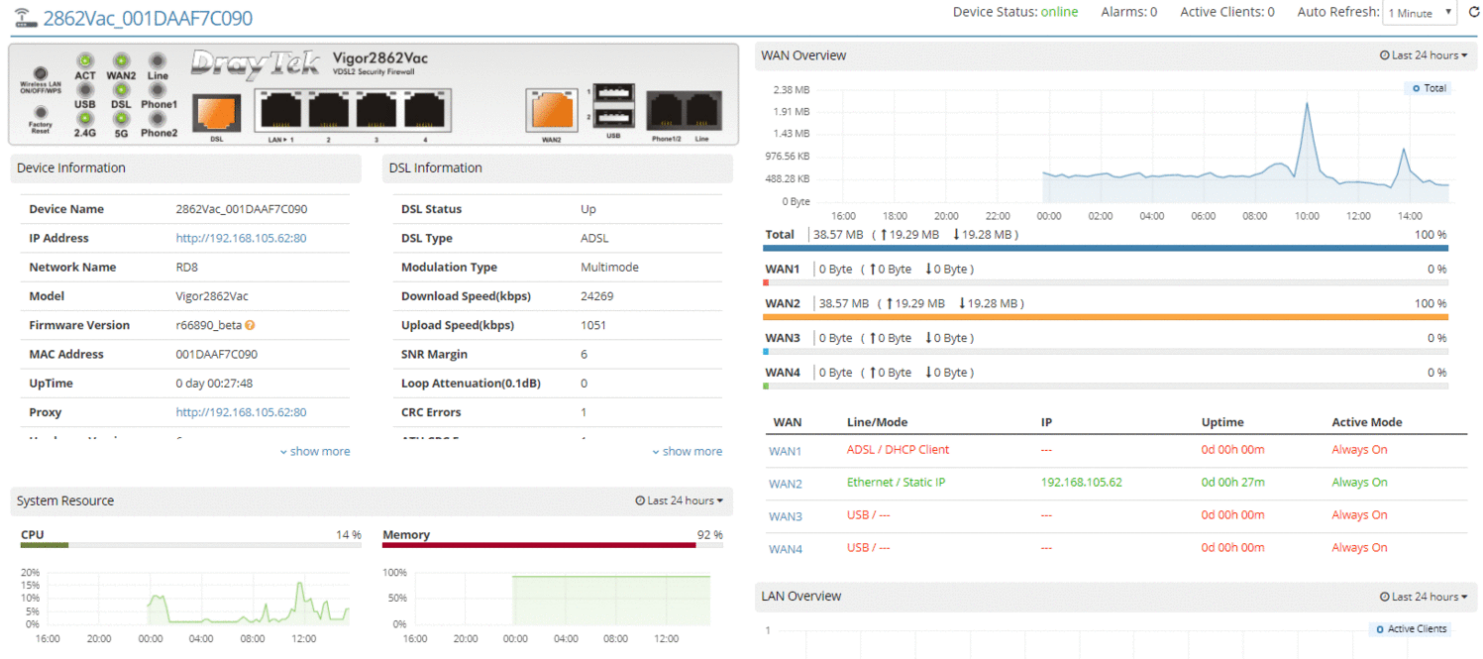
How to Start

1. CPE Online
2. CPE Registration: CPE identify the ACS server
3. CEP Authentication
4. Communication between ACS & CPE Begins!



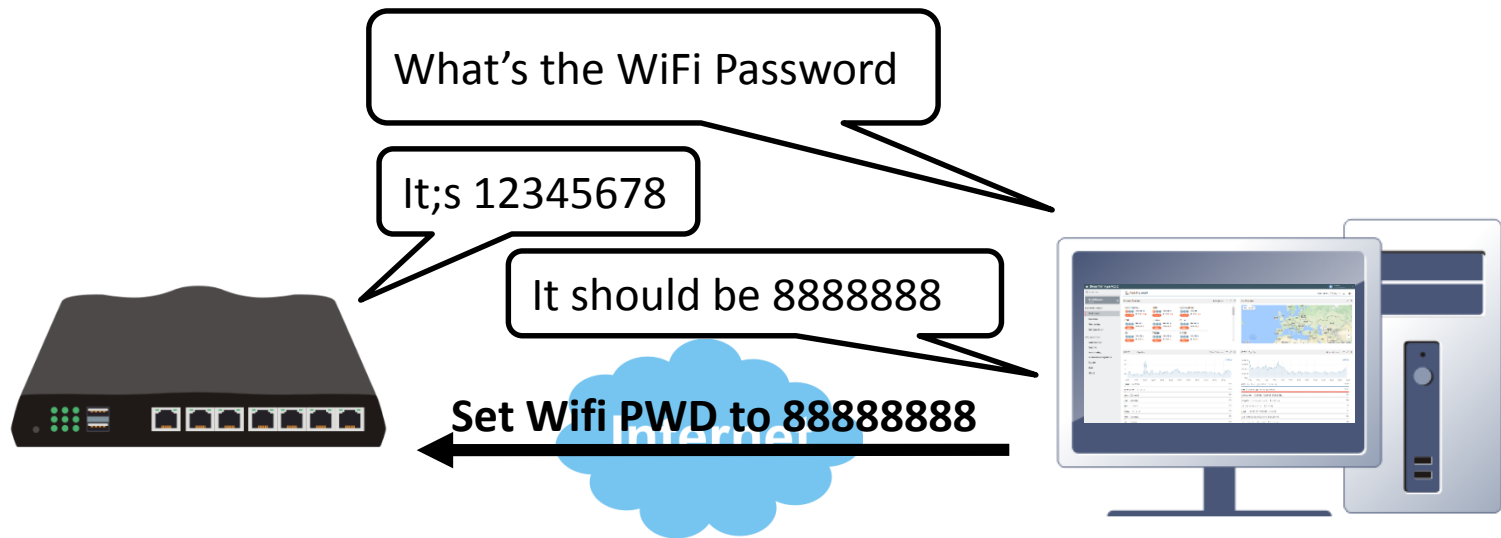
CPE Monitoring & Configuring

- Detailed Status Report
- Remote Configuration
- Firmware Upgrade, Backup & Restore, Remote Reboot



CPE Keep Parameter

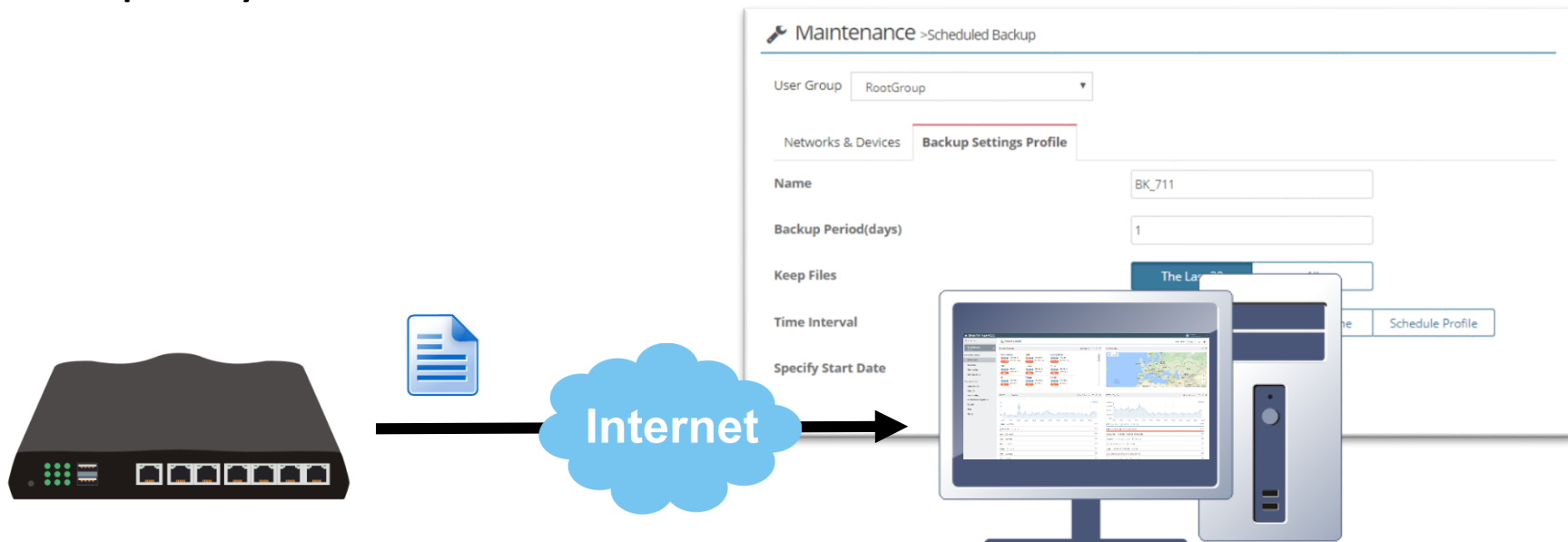
- A list of the CPE parameter that cannot be changed.
- Overwrite the existing value if it is different from the list
- Make sure the configuration on CPE will not be changed.



Periodic Backup

Download the configuration file from CPE periodically

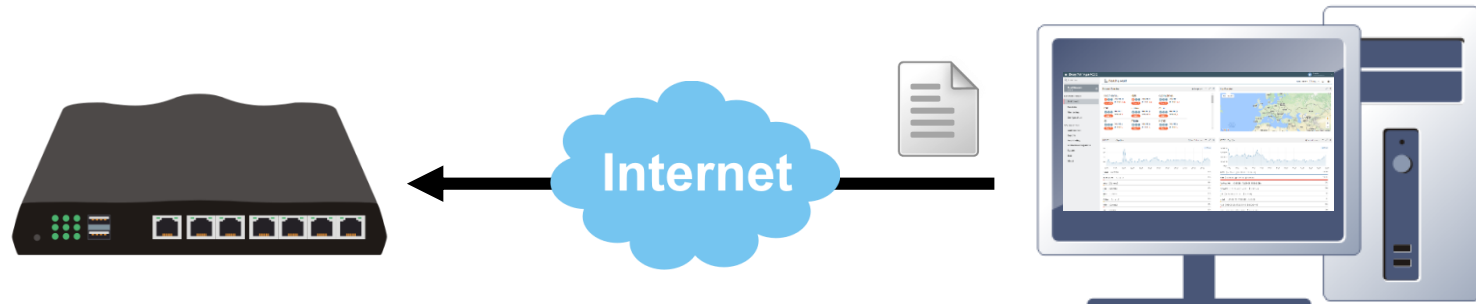
- Custom Period
- Keep 20 latest files or all files
- Specify time schedule



Scheduled Firmware Upgrade

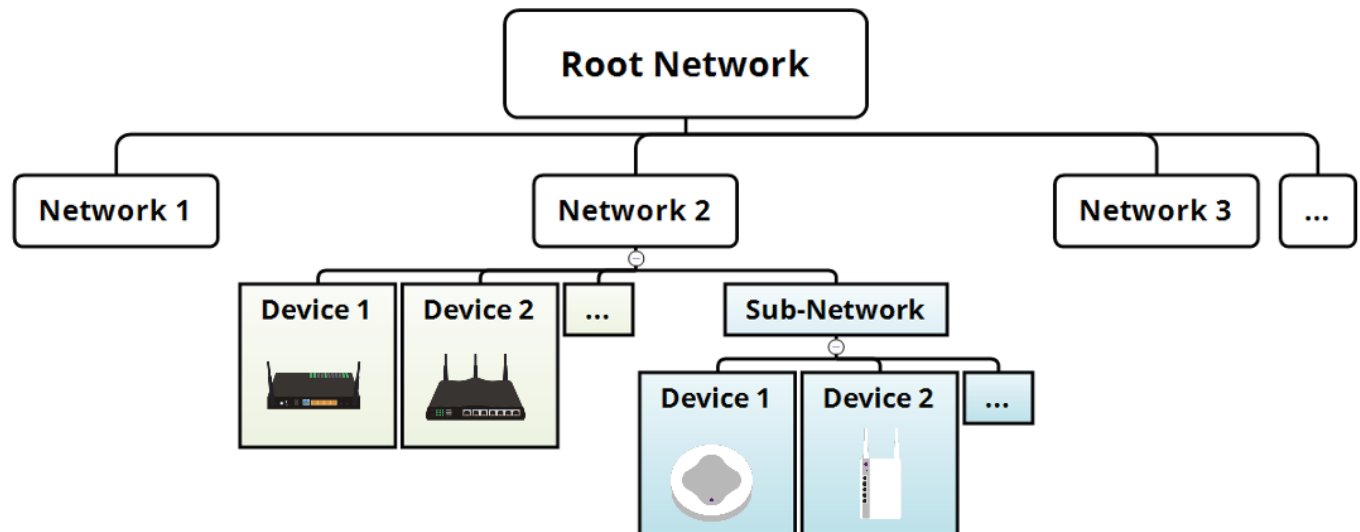
Upload Firmware file to the CPE at a specific time.

- Schedule a firmware update at non-office hour
- Perform firmware upgrade in bulk



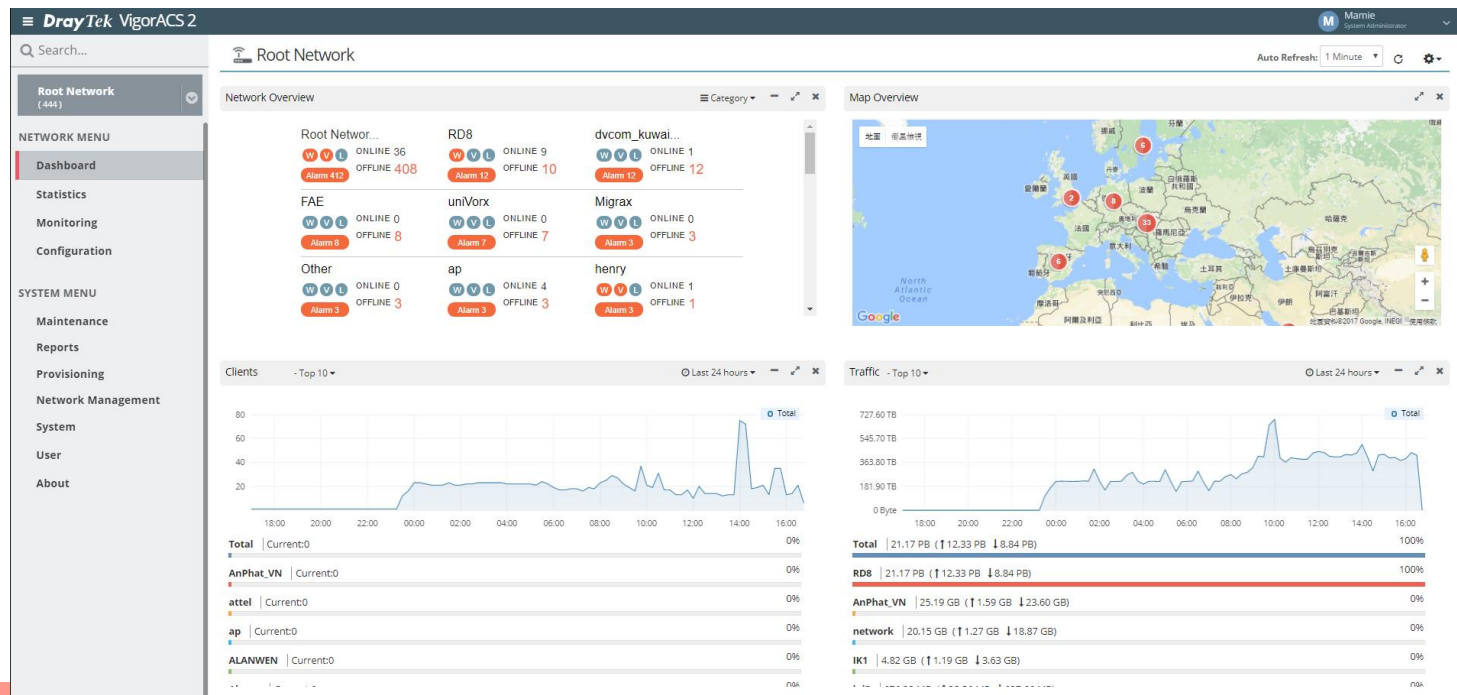
CPE Grouping

- CPE can be grouped into different '**Network**'
- Provisioning & maintenance can be based on networks
- The management authority of each network can be assigned to different users



Network Overview

- Get WAN & VPN Disconnection Alarm
- Map Overview
- Client & Traffic History



Device List

- Status
- IP Address
- Firmware Version
- Uptime

Monitoring > Devices

search Device Name / IP

Model

All

General

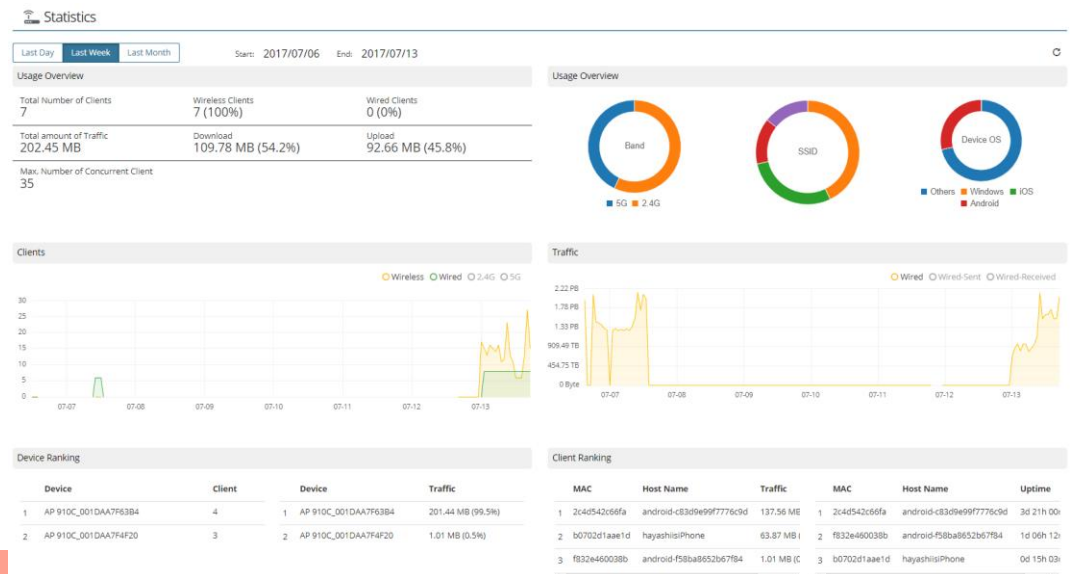
Wireless

1 / 24

Device	IP Address	Model	Network	Status	Up Time	F/W Version	Current Client	Current Traffic
2910V_00507FC26824	192.168.105.105	Vigor2910V	vigor2910	offline	0d:0h:0m:0s	3.2.6	0 (Local Wireless: 0)	0 Byte (↑ 0 Byte ↓ 0 Byte)
2860n_001DAAF7A900	192.168.105.103	Vigor2860n	Other	offline	0d:0h:0m:0s	3.8.2.3_STD	0 (Local Wireless: 0)	0 Byte (↑ 0 Byte ↓ 0 Byte)
3900_00507F7FFCE8	192.168.2.10	Vigor3900	Other	offline	0d:0h:0m:0s	1.3.0_RC1	0 (Local Wireless: 0)	0 Byte (↑ 0 Byte ↓ 0 Byte)
2132FVn_001DAAF50458	192.168.105.109	Vigor2132FVn	VPN	offline	0d:0h:0m:0s	3.7.8.2	0 (Local Wireless: 0)	0 Byte (↑ 0 Byte ↓ 0 Byte)
AP 710_00507FF10016	192.168.105.71	VigorAP 710	ap	online	0d:0h:0m:0s	1.2.1RC1	0 (Local Wireless: 0)	0 Byte (↑ 0 Byte ↓ 0 Byte)
AP 900_001DAA7E87BC	192.168.105.90	VigorAP 900	ap	online	24d:1h:58m:51s	1.2.1RC2	0 (Local Wireless: 0)	0 Byte (↑ 0 Byte ↓ 0 Byte)
AP 810_001DAA7D6514	192.168.105.81	VigorAP 810	ap	offline	0d:0h:0m:0s	1.2.1RC1	0 (Local Wireless: 0)	0 Byte (↑ 0 Byte ↓ 0 Byte)
AP 902_001DAA3D4F16	192.168.105.89	VigorAP 902	ap	offline	0d:0h:0m:0s	1.2.1	0 (Local Wireless: 0)	0 Byte (↑ 0 Byte ↓ 0 Byte)
AP 800_001DAA2A5B70	192.168.105.80	VigorAP 800	ap	online	0d:0h:0m:0s	1.1.6.1RC1	0 (Local Wireless: 0)	0 Byte (↑ 0 Byte ↓ 0 Byte)
AP 810C_001DAA47E5D8C	192.168.105.81	VigorAP 810C	ap	offline	0d:0h:0m:0s	1.2.1RC1	0 (Local Wireless: 0)	0 Byte (↑ 0 Byte ↓ 0 Byte)

Statistics

- Analysis for usage of network resources
- Showing client/traffic trend over last day/week/month
- Device ranking by client number and traffic
- Client ranking by traffic and uptime



Network Provisioning

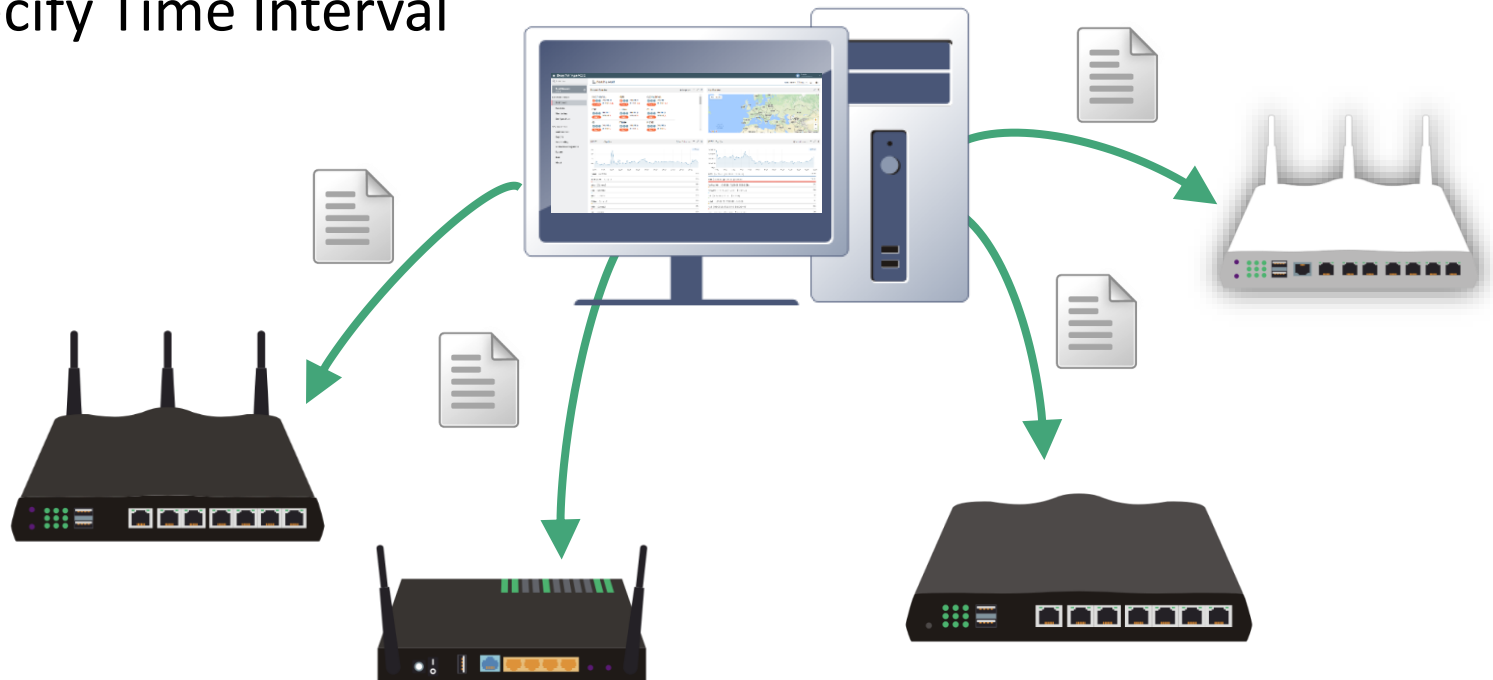
Apply pre-defined configuration to the newly joined CPE once they are online.



Firmware Provisioning

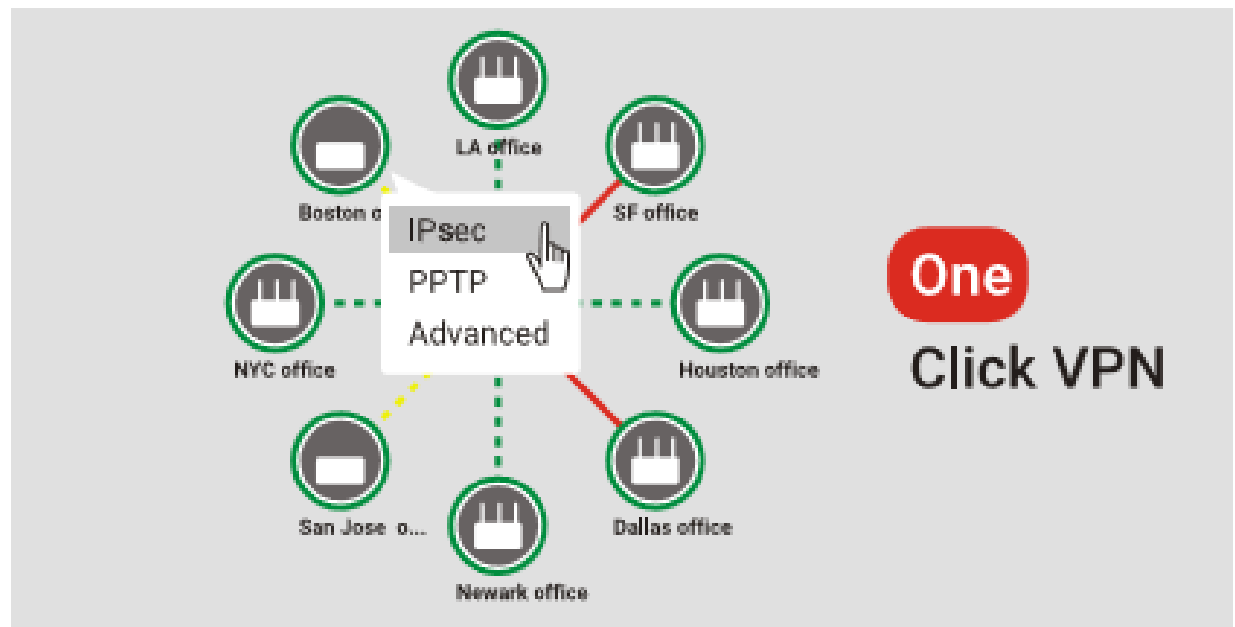
Update the firmware for all the newly joined CPE once they are online.

- Create Firmware Upgrade jobs by model
- Specify Time Interval



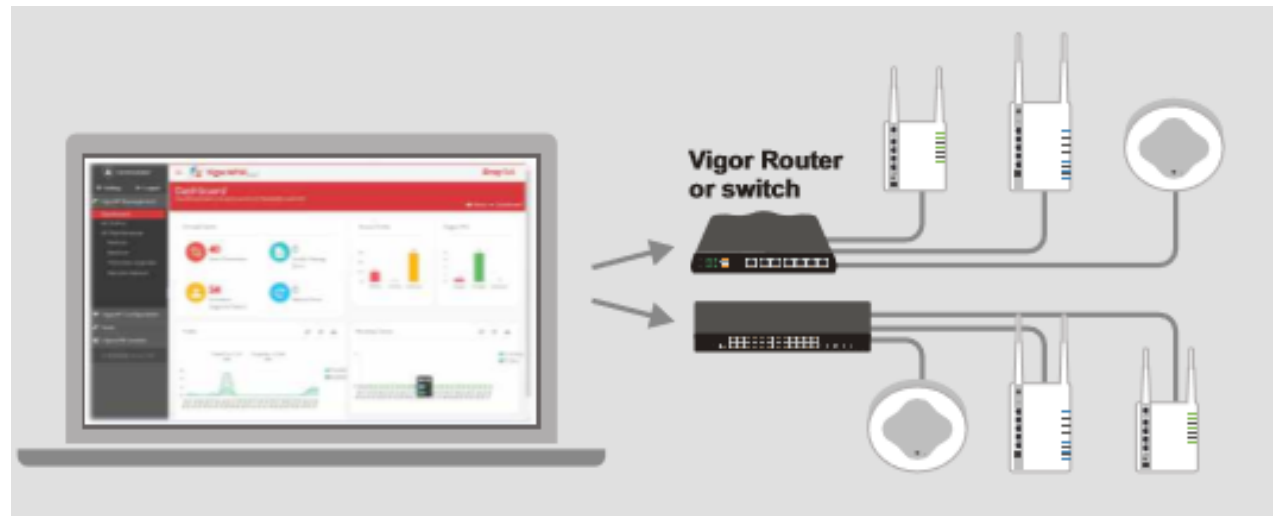
VPN Wizard

Easily establish a VPN tunnel between 2 managed routers by just one click!



AP Management

- Provisioning with AP Profile
- Floor Plan
- Client Monitoring
- Rogue AP Detection



Report Generating

Export reports about certain network or device

- Traffic overview
- Firmware status
- Network IP address
- Port Status Overview

... and more

AiESuaYKZW5kc3RyZWFTcmVuZG9iaGoxIDAgb2JqPDwvR3JvdXA8PC9TL1RyYW5zcGFyZW5jeS9UeXBIL0dyb3VwL0... 1 / 1

VigorACS Report

IP Overview Report

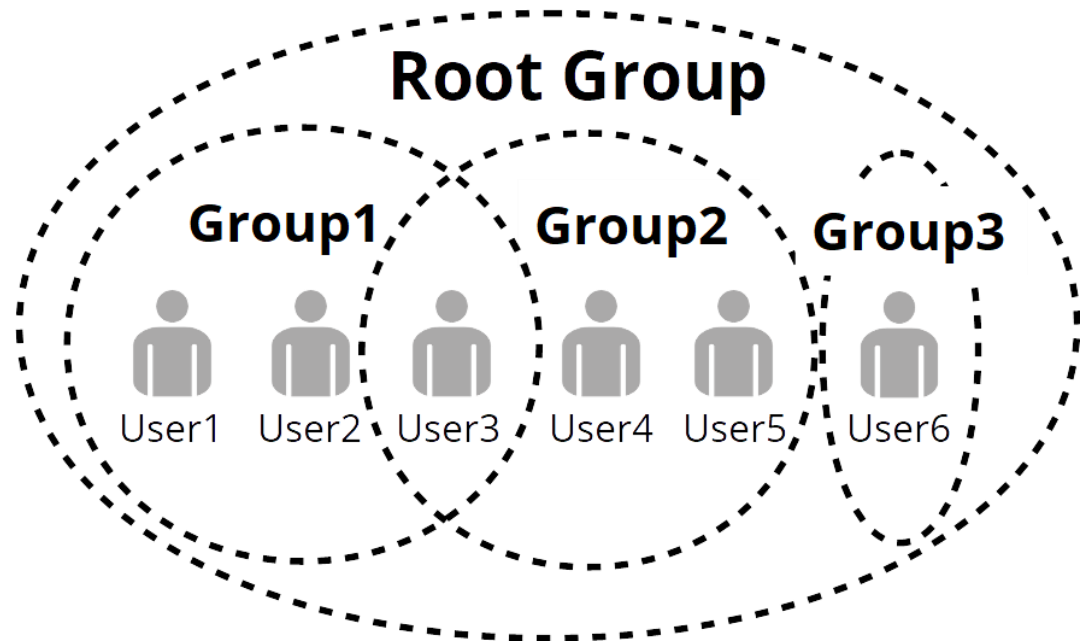
Device Total Count:19

Device_Name	Model	LAN	WAN1	WAN2	WAN3	WAN4	WAN5	WAN6	WAN7
DrayTek_001DAA_Vigor2925Ln_00	Vigor2925Ln	192.168.25.1	192.168.105.25	192.168.63.11					
DrayTek_001DAA_Vigor2132FVn_0	Vigor2132F	192.168.105.32							
DrayTek_001DAA_Vigor2926Vac_0	Vigor2926Va	192.168.26.1	192.168.105.26	192.168.105.101					
DrayTek_001DAA_Vigor2862Vac_0	Vigor2862Va	192.168.63.1		192.168.105.63					
DrayTek_001DAA_Vigor2760_001D	Vigor2760	192.168.105.76							
DrayTek_00507F_Vigor2830V_005	Vigor2830V	192.168.31.1		192.168.105.31					
DrayTek_001DAA_Vigor2850V_001	Vigor2850V								
DrayTek_001DAA_VigorZ_2952Pn_Vigor2952Pn		192.168.52.1		192.168.105.52					
DrayTek_001DAA_Vigor2133Vac_0	Vigor2133Va	192.168.105.33	0.0.0.0						
DrayTek_00507F_Vigor2830V_005	Vigor2830V								
DrayTek_00507F_Vigor2710n_005	Vigor2710n								
DrayTek_00507F_Vigor2960_001D	Vigor2960	192.168.105.96	172.16.2.179						
DrayTek_00507F_Vigor2130_0050	Vigor2130V	192.168.30.1	192.168.105.30						

Administrator Management

Role-based access control with 5 privilege levels:

- System Admin
- Group Admin
- Administrator
- Operator
- View Only Operator



Administrator Management

Logging shows user ID

[Export All](#) | [Delete](#) | [Delete All](#)

	ID	Device Name	Device ID	User ID	Parameter Key
<input type="checkbox"/>	732	2862Vac_001DAAF7C090	2894	root	Keep Profile
<input type="checkbox"/>	731	2132FVn_001DAAE486C8	2881	root	Keep Profile
<input type="checkbox"/>	730	2132FVn_001DAAE486C8	2881	root	Keep Profile
<input type="checkbox"/>	729	2862Vac_001DAAF7C090	2894	root	Keep Profile
<input type="checkbox"/>	728	2132FVn_001DAAE486C8	2881	root	Keep Profile
<input type="checkbox"/>	727	2132FVn_001DAAE486C8	2881	root	Keep Profile
<input type="checkbox"/>	726	2832n_001DAAE1D490_123	2976	Coie	Manual Set
<input type="checkbox"/>	725	2832n_001DAAE1D490_123	2976	Coie	Manual Set
<input type="checkbox"/>	724	2832n_001DAAE1D490_123	2976	Coie	Manual Set
<input type="checkbox"/>	723	2832n_001DAAF314A8	2995	allan_chiu	AdvanceSet
<input type="checkbox"/>	722	2832n_001DAAF314A8	2995	allan_chiu	AdvanceSet



VIGORACS 2 SMART MANAGEMENT MADE EASY



Thank you for your attention