

# Quick Installation Guide

WHG325 V3.30

Secure WLAN Controller

## Copyright Notice

This document is protected by USA copyright laws and other laws and is the property of 4IPNET, INC. You may not copy, reproduce, distribute, publish, display, perform, or modify any part of this publication in any form or by any means without prior written permission from 4IPNET, INC. You may not alter or remove any copyright or other notice from copies of the content. All other brand and product names are claimed or registered marks of their respective companies or organizations.

All rights reserved.

## FCC Caution

This equipment has been tested and found to comply with the limits for a Class A digital device, pursuant to Part 15 of the FCC Rules. These limits are designed to provide reasonable protection against harmful interference when the equipment is operated in a commercial environment. This equipment generates, uses and can radiate radio frequency energy and, if not installed and used in accordance with the instruction manual, may cause harmful interference to radio communications. Operation of this equipment in a residential area is likely to cause harmful interference in which case the user will be required to correct the interference at his own expense.

---

## Preface

---

This Quick Installation Guide provides instructions and reference material for getting started with the 4ipnet WHG325 Secure WLAN Controller. This guide will show you how to install WHG325 and get your network up and running with minimum configurations.

---

## Package Contents

---

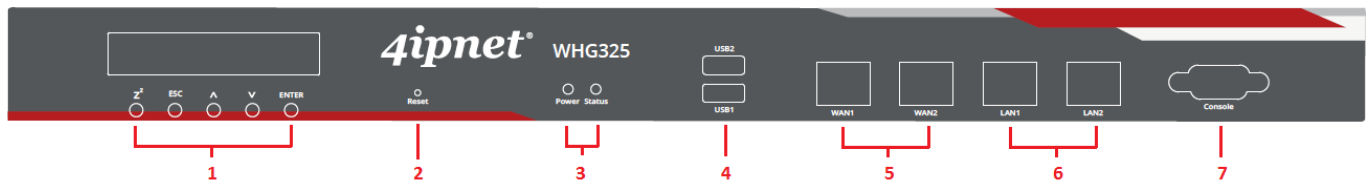
1. WHG325 x 1
2. Quick Installation Guide (QIG) x 1
3. Ethernet Cable x 1
4. RS-232 DB9 Console Cable x 1
5. Power Cord x 1
6. Rack Mounting Bracket (with screws) x 1



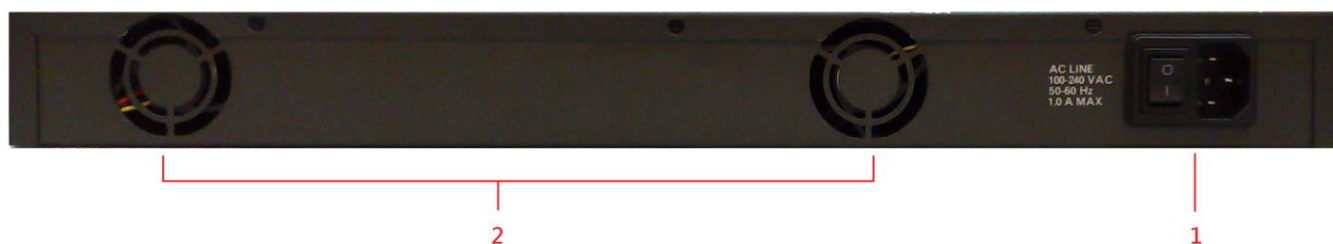
*It is highly recommended to use all the supplies in the package instead of substituting any components by other suppliers to guarantee best performance.*

## System Overview

### Front Panel



1. **LCD Display:** Allows network administrator to check important system settings such as network interface, SZ configurations, etc. The navigations buttons from left to right respectively are “Esc”, “Up”, “Down”, and “Enter”.
2. **Reset Button:** Press and hold the Reset button for over 3 seconds and status of LED on front panel will start to blink, release button at this stage to restarting the system. Press and hold the Reset button for more than 10 seconds and status of LED on the front panel will turn from blinking to off, release at this stage to reset the system to default configuration.
3. **LED Displays:** There are two LED light displays.
  - **Power:** Power LED lights up when power supply is on.
  - **Status:** Status LED blinks to indicates that system OS is booting up, when lit up constantly indicates that the system is ready for operation.
4. **USB1 / USB2:** Function reserved for future use.
5. **WAN1 / WAN2:** Two WAN port (10/100/1000 Base-T RJ-45) uplinks to the external network, such as the ADSL Router from your ISP (Internet Service Provider).
6. **LAN1 ~ LAN2:** Client machines or switch connect to WHG325 via LAN ports (10/100/1000 Base-T RJ-45).
7. **Console:** The system can be configured via a serial console port. The administrator can use a terminal emulation program such as Microsoft’s Hyper Terminal to login to the configuration console interface to change admin password or monitor system status, etc.

**Rear Panel**

1. **Power Supply Socket:** Connect the power cord to the power socket.
1. **Device cooling fans:** For heat dissipation. Please do not block the ventilation openings.

## ***Hardware Installation***

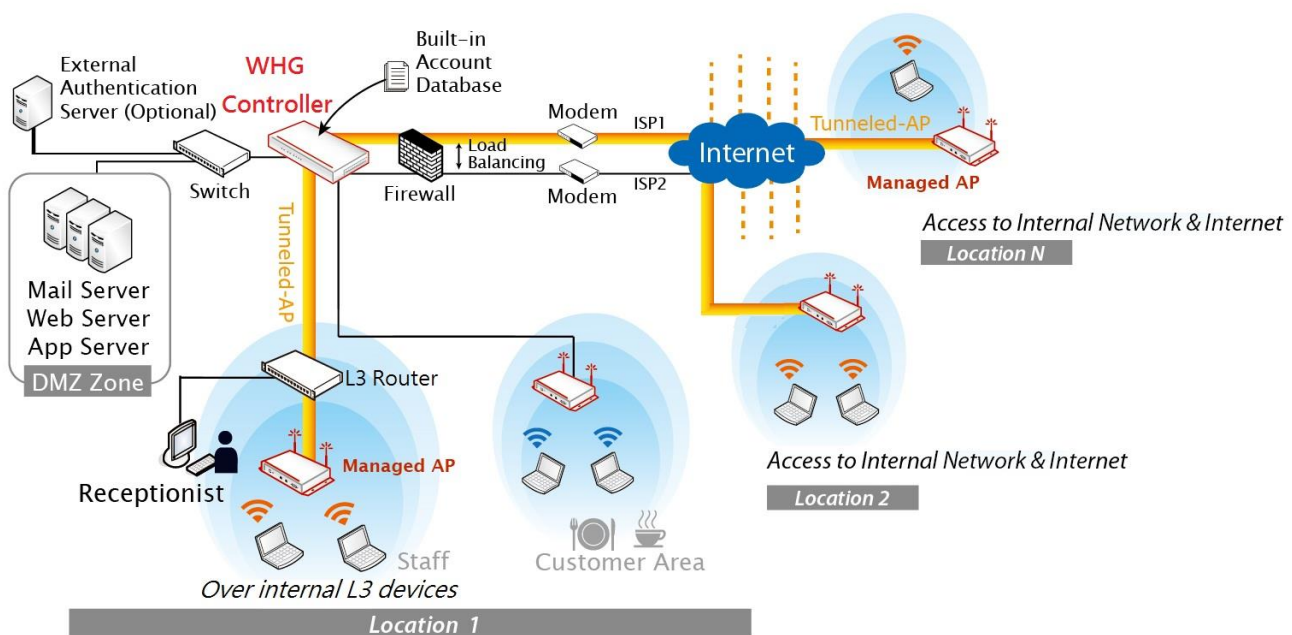
Please follow the following steps to install WHG325:

1. Connect the power to the power socket on the rear panel.
2. The Power LED should be on to indicate a proper connection.
3. Connect an Ethernet cable to the WAN1 Port on the front panel. Connect the other end of the Ethernet cable to an xDSL/cable modem, or a switch/hub of an internal network. The LED of this port should be on to indicate a proper connection.
4. Connect an Ethernet cable any LAN Port on the front panel. Connect the other end of the Ethernet cable to an administrator PC for configuring the WHG325 system, an AP for extending wireless coverage, a switch for connecting more wired clients, or a client PC. The LED of this LAN port should be on to indicate a proper connection.

# Getting Started

## < System Concept >

4ipnet WHG325 is capable of managing user authentication, authorization and accounting. The user account information is stored in the local database or a specified external database server. Featured with user authentication and integrated with external payment gateway, WHG325 allows users to easily pay the fee and enjoy the Internet service using credit cards through Authorize.net, PayPal, SecurePay, or WorldPay. With centralized AP management feature, the administrator does not need to worry about how to manage multiple wireless access point devices. Furthermore, WHG325 introduces the concept of Service Zones - multiple virtual networks, each with its own definable access control profiles. This is very useful for hotspot owners seeking to provide different customers or staff with different levels of network services. The following diagram is an example of WHG325 set to manage the Internet and network access services centrally over different physical locations.

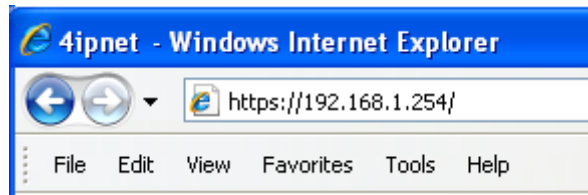


## < Web Management Interface >

4ipnet WHG325 supports web-based configuration. Upon the completion of hardware installation, WHG325 can be configured via web browsers with JavaScript enabled such as Internet Explorer version 9.0 and above or Firefox.

1. To access the web management interface, connect a PC to any **LAN Port**, and then launch a browser.  
**Make sure you have set DHCP in TCP/IP of your PC to get an IP address automatically.**

2. Next, enter the gateway IP address of WHG325 at the address field. The default gateway IP address is ***“https://192.168.1.254”*** (“https” is used for a secured connection).

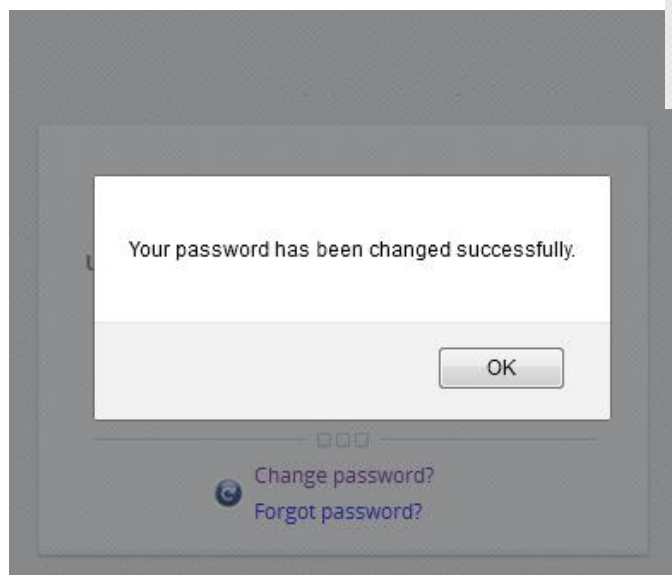
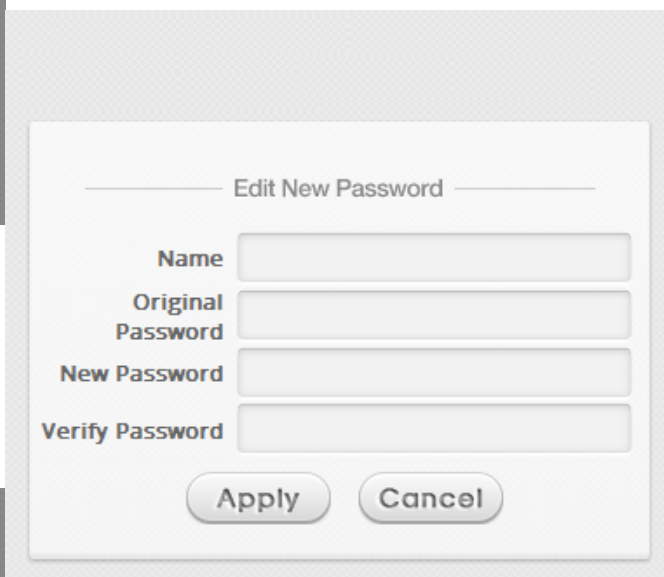
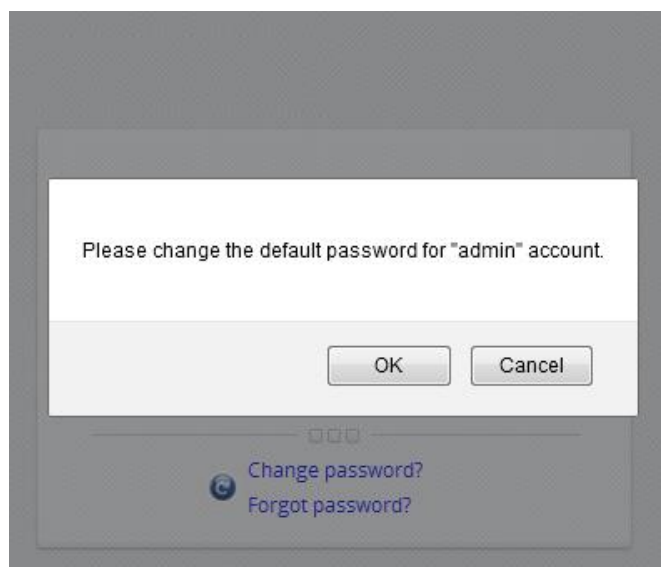


3. The administrator login page will appear. Enter ***“admin”***, the default username, and ***“admin”***, the default password, in the User Name and Password fields. Click ***Enter*** to log in.

A screenshot of the administrator login page. The page has a light gray background. In the center is a white rectangular box with a thin gray border. At the top of this box, the word "LOGIN" is centered in a bold, black, sans-serif font. Below "LOGIN" are two input fields. The first is labeled "Username" in a bold, black, sans-serif font. The second is labeled "Password" in a bold, black, sans-serif font. To the right of the "Password" field is a rounded rectangular button with the text "Log In" in a bold, black, sans-serif font. Below the input fields and the "Log In" button, there are three small square checkboxes. At the bottom of the box, there are two links: "Change password?" and "Forgot password?", both in a blue, sans-serif font. A small blue circular icon with a white "e" is positioned to the left of the "Forgot password?" link.



4. After a successful login, the system prompts for the administrator to change password to enforce system security. The password needs to be at least 6 characters long and include at least one alphabet and one number.



5. After a successful login, a Welcome page will appear on the screen.

## Welcome to System Main Menu



This Administrative Web Interface allows you to set various networking parameters, to customize network services, to manage user accounts and to monitor user status.

Functions are separated into the following main categories:

[System](#) , [Users](#) , [Access Points](#) , [Switch](#) , [Network](#) , [Utilities](#) , and [Status](#) .

For a quick overview of the system, please refer to the [Dashboard](#).

For shortcut links to the Dashboard, you may click the 4ipnet Logo on the top-left, or click the '[Dashboard](#)' icon on the top-right.

The '[Star](#)' icon on the top right is a [Setup Wizard](#) that provides a quick step-by-step guide on setting up your system.

For help with your system configuration, click the [?](#) Icon for Online Help.

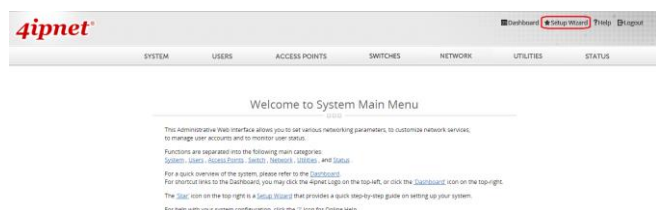


*If you can't get the login screen, the reasons may be: (1) The PC is set incorrectly so that the PC can't obtain the IP address automatically from the LAN port; (2) The IP address and the default gateway are not under the same network segment. Please use default IP address such as 192.168.1.xxx in your PC and then try it again. For the configuration on PC, please refer to **WHG325 User's Manual**, "Network Configuration on PC & User Login".*

## Common Settings

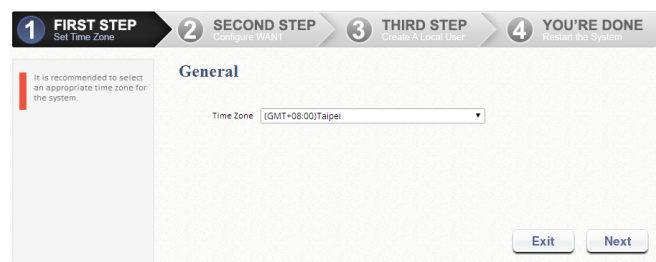
### < Setup Wizard >

WHG325 provides a **Setup Wizard** for quick configuration. To quickly configure WHG325 by using the **Setup Wizard**, click on the **Setup Wizard** button on the top right corner to start the configuration process.



#### Step 1: General

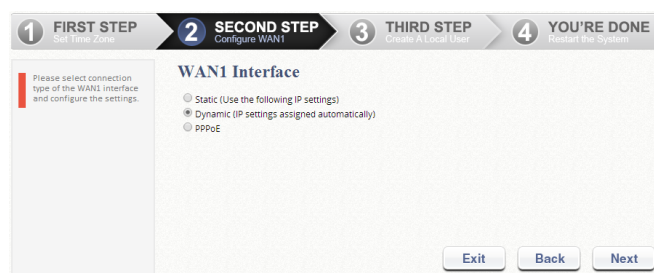
- Select an appropriate time zone from the **Time Zone** drop-down list box to set up the system time.
- Click **Next** to continue.



#### Step 2: WAN1 Interface

For setting up both wired WAN and wireless LAN functions:

- Select a proper type of Internet connection for WAN1 interface from the following three available connections: **Static**, **Dynamic**, or **PPPoE**. Your ISP or network administrator can advise on the connection type available to you. Below depicts an example for **Dynamic**.
- Click **Next** to continue.



#### Step 3: Local User Account (Optional)

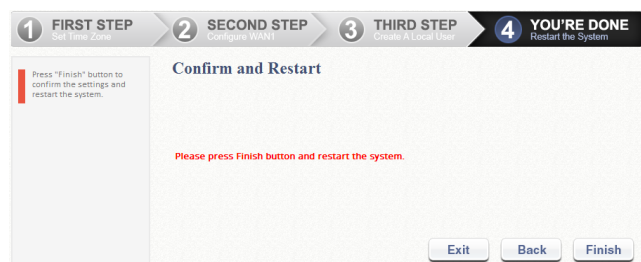
New local accounts can be created and added into the database via this optional function. If local user accounts are not required, click **Skip** to go directly to **Step 4**. However, It is recommended to create at least one local user account in order to verify the system's readiness upon completion of this **Setup Wizard**.

- Enter the **Username** (e.g. "testuser") and **Password** (e.g. "testuser") to create a new local account.
- Click **Next** to continue.
- More local accounts can be added by clicking the **Back** button in **Step 4**.



#### Step 4: Confirm and Restart

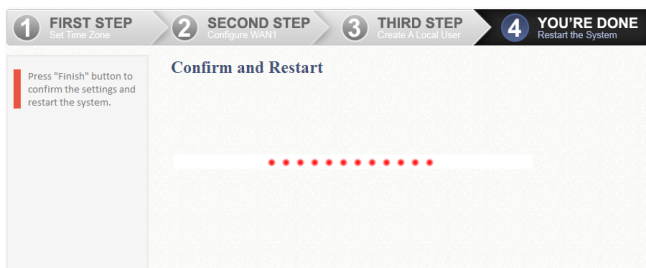
- Click **Finish** to save current settings and restart the system.



- A confirmation dialog box will then appear. Click **OK** to continue.



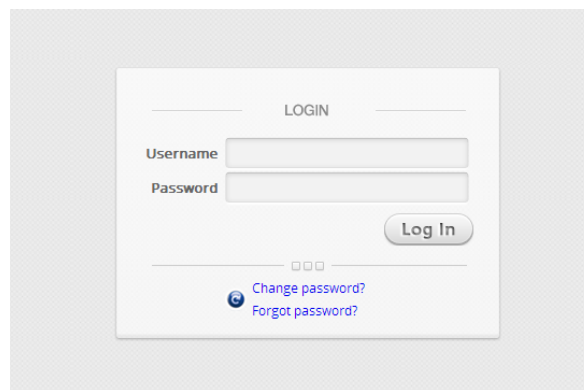
- A **Confirm and Restart** message will appear on the screen during the restarting process. Please do not interrupt the system until the Administrator Login Page appears.



#### ► Note:

The system is trying to locate a DNS server at this stage. Therefore, a longer startup time is required if the configured DNS cannot be found.

- When the following Administrator Login Page appears, it means the restart process is now completed.

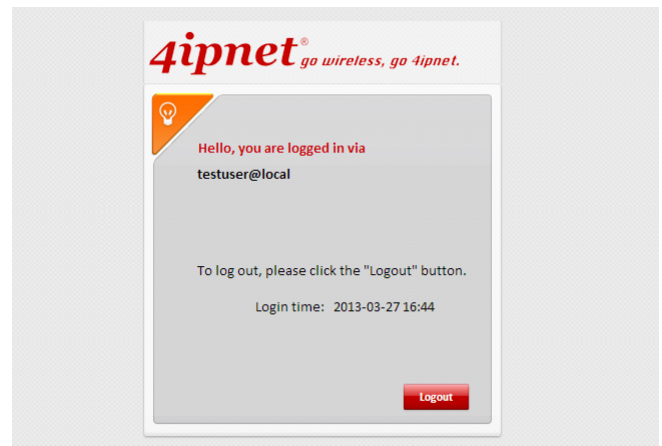


### < User Login >

To verify whether the configuration of the new local user account(s) created via the **Setup Wizard** has been completed successfully:

1. Connect a client device (e.g. laptop, PC) to any LAN Port of WHG325. The device will obtain an IP address automatically via DHCP.
2. Open a web browser on a client device, access any URL, and then the default **User Login Page** will appear.
3. Enter the *Username* and *Password* of a local

user account previously generated via Setup Wizard (e.g. “testuser@local” as the *Username* and “testuser” as the *Password*); then Click **Login**.



» **Note:**

1. WHG325 supports multiple authentication options including built-in local user database and external authentication database (e.g. RADIUS). The system will automatically identify which authentication option is used from the full username entered.
2. The format of a full (valid) username is **userid@postfix**, where “**userid**” is the user ID and “**postfix**” is the name of the selected authentication option.
3. **Exception:** The postfix can be omitted only when the default authentication option is used. For example, “**LOCAL**” is the default authentication option at this system; therefore, you may enter either “**testuser**” or “**testuser@local**” in the *Username* field.

## ***Congratulations!***

The Login Success Page will appear after a client has successfully logged into WHG325 and has been authenticated by the system.

The appearance of Login Success Page means that WHG325 has been installed and configured properly.

## **< Service Zone & AP Management >**

4ipnet WHG325 has introduced an important new concept called “**Service Zone**”. For how to set up Service Zones, please refer to the User’s Manual.

WHG325 can centrally manage multiple access points (APs). For how to set up the “**AP Management**” feature, please refer to the “**AP Management**” section of the User’s Manual.

***For further configuration and information, please refer to the User’s Manual.***

P/N: V33020150209